



CRICKET
FOUNDATION



2022 Annual Review

Shaping Positive Futures

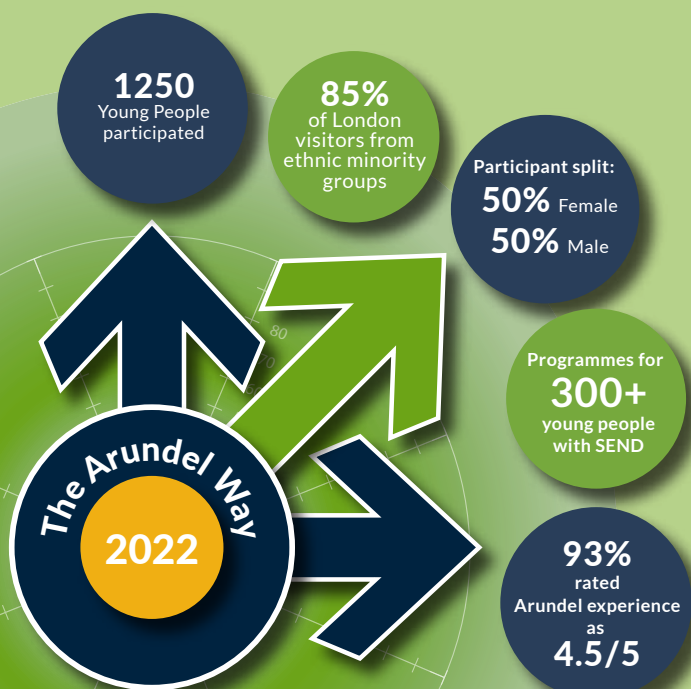
Inspiring and enhancing the education,
health and wellbeing of young people

Our Foundation

We've been supporting young people for more than **36 years**. And throughout that time our purpose has never wavered – to challenge the inequalities that exist in cricket and society in general by providing cricket-centred educational, enriching and potentially life changing opportunities to under-served communities.

Whether it be cricket, staying away from home for days at a time for the first time, seeing a beach or a castle for the first time or playing in the woods for the first time, the experiences we provide here at Arundel and its incomparable setting offer something different – an opportunity to reset and refresh, to consider new horizons, and to learn the skills and make the friendships that create a pathway to a better, more positive future.

We'll talk about our work during the pandemic and in particular, the last 12 months throughout this report. Please feel free to contact us here at the Foundation if you'd like any further information.



Foundation Welcome



I always enjoy this time of year. For many the New Year offers a period of reflection, and it's no different for us here at the Foundation.

I'm now three years into my stewardship of the Arundel Castle Cricket Foundation. Working in the shadow of a Castle with more than **1,000 years** of history reminds me every day of why we do what we do – and how we are here to help shape the next generation.

We've achieved a lot over the last 3 years, and especially over the last 12 months as we've moved up a gear following the easing of the pandemic. We've operated a full calendar, engaged London-based, Local and special educational needs and disability groups (SEND) groups, and reached more young people with additional needs than ever before.

Our new strategy will take us through to 2025 and sets out our plans to make our interventions and engagements with young people even more impactful at a time when the needs of young people facing disadvantage are arguably as great as ever. It also outlines our plans to bolster and strengthen our organisation in the face of a challenging economic climate and to continue to meet the expectations of our supporters who quite rightly expect us to operate efficiently and with high standards of governance.

I've shared a selection of stories over the coming pages that paint a picture of just how much an Arundel visit means to the young people we reach.

Tim Shutt

Director, Arundel Castle Cricket Foundation

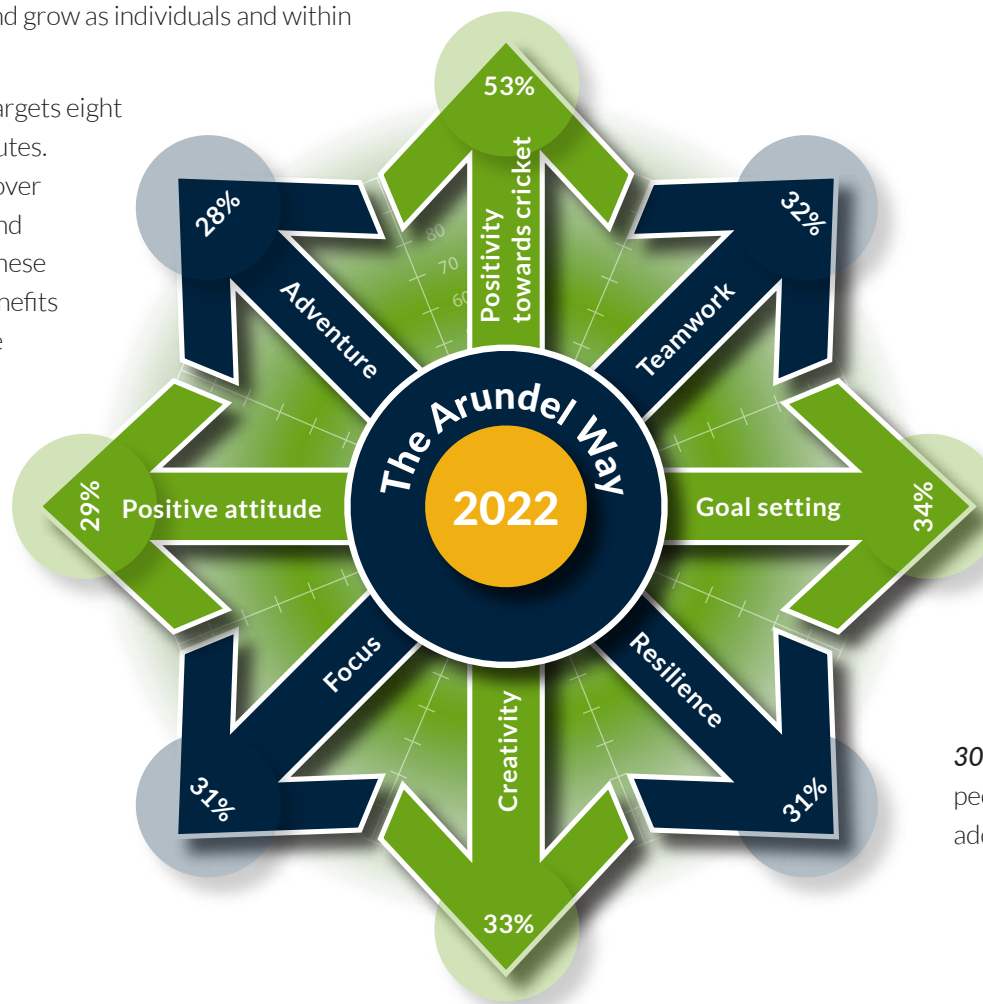
The Arundel Way

We created the Arundel Way to be our compass, to guide our thinking and to shape the experiences we offer the young people visiting Arundel.

Developing a passion for cricket, and the skills and attributes that lead to success on and off the pitch, are a key focus for the Foundation. They also lead to positive outcomes beyond the boundary, supporting young people as they progress through school and into the workplace, and as they continue to learn and grow as individuals and within their communities.

The Arundel Way targets eight key skills and attributes. We'll explain more over the coming pages and demonstrate how these provide tangible benefits to the young people we engage.

The % indicates the overall rise in how young people rated their progress in these skills and attributes further to their Arundel experience



We look to provide positive and inspirational experiences to young people from inner London boroughs, local across Sussex and for those with additional needs. No matter where they come from, or if they visit us once, on multiple occasions or as part of a residential experience, we always aim to raise aspirations and broaden horizons.

400+ young people coming to Arundel from London

- Various partners visiting for residential stays
- Dukes Aldridge Academy
 - Capital Kids Cricket
 - Surrey Cricket Foundation
 - The ACE (African Caribbean Engagement) Programme
 - The Refugee Cricket Project
 - MCC Foundation
 - Essex Cricket in the Community

500+ young people visiting from Sussex

- Children living in care
- Children excluded from mainstream education
- Children struggling at school
- Schools from the most deprived parts of Sussex
- Families facing difficulty in partnership with Family Support Work Charity
- Ukrainian Families
- Young people with significant mental health problems in partnership with West Sussex MIND

300+ young people with additional needs

Over 20 SEND schools and community groups visiting Arundel, many including a residential stay.



Teamwork



"the way you have treated us, we love the respect, the way we communicate, they way we are getting along, it's nice, it's different"

Parent from Lambeth

We were really pleased to host a group from Surrey Cricket Foundation for the second time this year as part of the Chance to Shine "Street" programme in Lambeth.

While already connected through cricket these sessions offer new experiences and broaden the horizon of those joining us here at Arundel. **25** young people aged eight to eleven spent two nights with us in the middle of summer of 2022. This is often their first stay away from home so it can be both an exciting and daunting experience.

Before Arundel they rated their 'team ethic' as **7 out of 10**. This now stands at **9.3 out of 10!** Feeling part of a team is so important – offering much needed, support, encouragement and the trust to give things a go on and off the pitch.



Positive towards cricket

A visit to Arundel often entails a young person's first experience of playing cricket. We seek to inspire them to love the game and then signpost the opportunities to continue to participate back in their communities.

We welcomed **60** students from the Duke's Aldridge Academy, Tottenham – a high school set in the heart of north London on the Northumberland Park Estate. During their visit they experienced all that Arundel has to offer – cricket, the castle, a residential stay and visits to the beach – that all support the school's commitment to individual development. The group camped on our ground at Arundel – the first group ever to do so – with the group playing freely into the evening, something sadly they are often unable to do at home.

The group's perspective on cricket shifted significantly. Before their visit less than half were positive about the sport – by the time they were headed home that had risen to **8 out of 10**, and an increase of nearly **70%!** The recently formed MCC Foundation hub in Tottenham will enable these youngsters to continue to develop their newly found passion for cricket.



"The Arundel trip opened my eyes to new opportunities that could be out there"

Goal setting

This is where the sporting metaphors really work! In cricket we set ourselves goals and work towards them – improving our batting, sharpening our fielding or achieving a better line and length.

The Arundel Way encourages the same behaviours that can be used at school, at home or as our participants move into work. Our wider set of programmes in partnership with organisations that share our values and objectives such as the African Caribbean Engagement programme (ACE), the Refugee Council, MCC Foundation or Essex Cricket in the Community exemplify these aspirations. Each partnership encourages cricketing development with an Arundel playing experience being the end goal. At the same time each programme offers the opportunity to set goals beyond cricket.

Pictured below from left to right: ACE, East London XI, Refugee Cricket Project XI and a West Sussex XI in a 2 day festival, including overnight stay, showcasing cricket's diversity and promoting social mixing.



Pictured: MCC Foundation Hubs day with teams from Tottenham, Newham and Tower Hamlets.

The feedback we receive so often covers both outcomes. Players recognise the value of playing cricket on a quality pitch often for the first time. The stories we hear from recent and previous visitors often talk about how Arundel provided aspiration and helped them to see beyond their current situation and plan for college or university, to consider new potential careers, to explore new friendship groups or to think about travelling and new experiences.

For 36 years, we have been absolutely of the opinion that the opportunity to play at Arundel should be shared and not solely for an elite few. Moving forward, we seek to gather further evidence from previous groups to improve our understanding of our impact in this area and to identify where our programmes and interventions can be strengthened to better facilitate social mobility and increase the social impact we generate.

Focus



Aspiring cricketers from Capital Kids Cricket have been visiting the Foundation for many years. In fact, the first group took to the crease more than 20 years ago with a further **180** visiting last year! While providing a fantastic cricketing opportunity we also look to develop other skills.

Groups like these recognise the value that focus brings to their game – during both practice and game time. Our own goal is to help our participants take those skills and apply them in other parts of their lives.

It was very much the case here – participants reported an increase of 36% in their ability to focus on a task, while 55% said the skills they'd learned here at Arundel would improve their focus at school.



Resilience



Over the summer, **271** of Bohunt Educational Trust's students spent a total of **12** days with us coming from Worthing, Steyning, Horsham, Liphook and Southsea.

Many young people struggle with resilience which is a key skill for both cricket and in our daily lives, and it forms a key part of the Arundel Way. Sessions explore how to overcome challenges, to persevere and to learn how to offer and how to receive the support of your peers. This includes wellbeing talks delivered by former Sussex CCC professional Lewis Hatchett. Lewis has an inspirational personal story relating to overcoming adversity and how to become the best version of yourself.

While the students from Bohunt Educational Trust all reported differing levels of resilience before their visit their post-programme averages were all around the 80% percent mark.



Positive attitude



With many parts of Sussex impacted by inequality of opportunity and deprivation our programmes are just as impactful for communities on our doorstep as they are for our London cohorts.

This was our second year working with the wonderful students from White Meadows primary school in Littlehampton. We wanted to use the inspirational setting of Arundel to encourage the students to think expansively and look up and ahead to broader horizons.

Feedback from the headteacher offered these insights *"Many of our students discussed their goals for the future with the staff from the mindful session. It was good for them to think about their future and where their life is heading, as our children are not always surrounded by the best role models in their home life."*

The Foundation welcomed
90 students from White Meadows



Adventure



We often refer to an Arundel visit being a series of firsts. So we encourage a spirit of adventure in everything we do whether that be playing cricket, camping, trying new foods and understanding their origins or playing in the woods. For many of the local groups that visit, opportunities to experience these things just simply haven't been there.

We further developed our partnership with West Sussex MIND. With their staff having provided awareness training to our workforce in 2021, we used these skills to engage groups of young people impacted by significant mental health issues, encouraging them to try new things. One participant commented *"My favourite thing was being able to prove to myself that I can do these sorts of events, and feel a sense of comfort around others, doing a range of activities, and building good relations with others, even if at times I might have seemed (and possibly was) distant."*



We continued to work with young people at the more vulnerable end of the scale. Children living in care and children excluded from mainstream education visited for sessions spread across a number of weeks. It is a pleasure to be able to provide the opportunities we do to these young people, many of whom have had very challenging beginnings.

The family days we started during the pandemic continued and our partnership with the Family Support Work charity goes from strength to strength. Many of these families are facing extreme difficulty for all sorts of reasons and are so grateful for the various sporting and outdoor recreation activities we provide.

We also provided activity days for Ukrainian families and indoor net play for recently settled Afghan refugees.

Creativity



We use the safe, secure and inspirational grounds of Arundel to provide opportunities to young people impacted by additional needs.

Our programmes in 2022 saw us engage with a number of **SEND** schools in London and Sussex, reaching more than **300+** young people over **25** days here at Arundel.

While we often talk about the value of thinking creatively to solve problems, we can easily overlook the importance of having the headspace and thinking space we need to do so.

Pictured below: young people from Oak Grove, Heronsdale and Palatine SEND schools.



Dear Tim and ACCF,

Many thanks for choosing our school to come and share the beauty that is Arundel and to enjoy learning some cricket skills. The last few days have been really lovely – as I mentioned on Monday some of these children are currently seeing CAMHS, some expressing suicidal ideation, some with other mental health issues. The chance to be here, in serene and green grounds with lots of fresh air and exercise has visibly reduced many anxieties and given respite to their families. Thank you.

Headteacher, SEND School

Young people with SEND visiting Arundel use the space and activities in ways that work for them. Some like to play cricket, some like to roll down the banks, some like to lie on the outfield and watch the sky.

For me, this is one of the key outcomes of our work with young people with additional needs. Life can be hectic with little time to release and redress the daily stresses and anxieties. Time spent at Arundel among the trees, within nature and history, and in the company of friends offers that chance to reset, to rebuild your mindset and to be creative. It's why we love receiving letters like the one above!

It's so much more open, and also it's allowed me to spend more time with my friends, than I would have before in school"

Looking Ahead

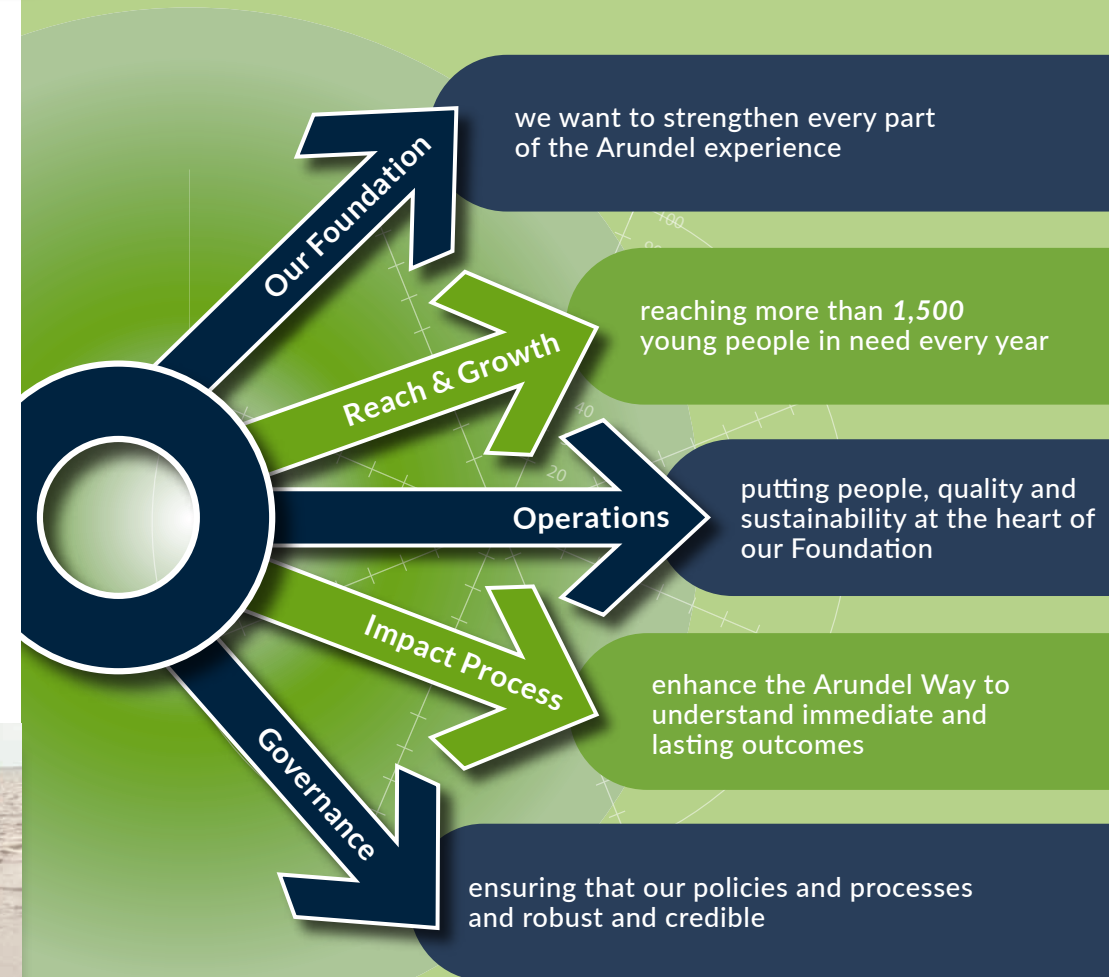
Our new strategy outlines our commitment to supporting the personal, social and educational development of young people. Through to 2025 we will continue to engage three groups of young people: those from inner London Boroughs, those with special educational needs and disabilities, and those from local communities. We're committed to ensuring that each and every visitor receives a magical experience that offers lasting and positive outcomes.

Why do we do this? There's no doubt that young people already facing inequality or disadvantage have been disproportionately affected by the pandemic and the economic climate suggests further difficulty for young people and their families in the coming years. The need for interventions such as ours is as great as ever if not more so.

It's why we've set a new three-year strategy with clear aspirations to engage more young people, cement and enhance our partnerships, and ensure that our offer, operations and governance are more robust and effective than they've ever been.



Our Priorities for 2025



You can read our full strategy at www.arundelcastlecricketfoundation.co.uk

Chairman's Report

It is a pleasure to report that the Arundel Castle Cricket Foundation has emerged from the pandemic with strength and purpose. Its *raison d'être* has never been greater as young people and their families struggle with the stresses and strains of contemporary life. It is a joy to see and hear young people having a magical experience when they visit the ground, the woodlands, the Castle and everything else that Arundel can offer.

Under Tim Shutt's superb leadership, those who come to Arundel benefit from the thought, energy and work that goes on behind the scenes. Collaboration and partnership lie at the heart of the Foundation's activities. Shared values and desired outcomes are essential to making a positive difference to young people's lives. As you will have read in the Review, we are working hard to measure the difference we make in order to understand which aspects of our charitable programmes are most effective. We are constantly reviewing and refining our activities to ensure the best outcomes.

I would like to pay tribute to the teachers, parents and community group leaders. Without their support and commitment, none of this would be possible. The wonderful ACCF coaches deliver our activities with great skill, sensitivity and humanity. The ground is always looking immaculate thanks to the tireless work of the Friends of Arundel Castle Cricket Club (FACCC) ground staff. The young people enjoy proper meals thanks to the catering staff. It really is a team effort and we are very fortunate to have the active support and encouragement of the Duke of Norfolk and Earl of Arundel.

The trustees take their responsibilities very seriously and exercise active oversight of the strategy, the budget, safeguarding policies, charitable activities and board planning and succession. We are a small charity intent upon making a big difference to those young people who visit us.

I would like to thank all our generous donors who support the Foundation. Your trust and commitment are never taken for granted. In particular, I would like to mention the exceptionally generous legacies left to the Foundation by John Knight and Susan-Ann Dowle. Both loved Arundel and everything associated with this wonderful ground. Our strong financial position allows the Foundation to plan for the future with confidence and, for this, we are immensely grateful.

Peter Bristowe

Thank you

We couldn't achieve what we do without the support, kindness and generosity of so many people.

Foundation President:
Duke of Norfolk

Foundation Vice-President:
John Barclay

Foundation Patrons:
Clare Connor CBE, Antonia Daggart, Sir Tim Rice and Oliver Stocken CBE

Foundation Trustees:
Peter Bristowe (Chair of Trustees), Arfan Akram, Michael Atherton OBE, Rob Bruce, Harry Chetwood, Alastair Deighton, Nigel Draffan (Treasurer), Rachel Foster, Jocelyn Galsworthy, Amanda Jupp, Mark Milliken-Smith KC, Caroline Nicholls DL, Richard Pyman

Foundation Supporters:

*Aldridge Foundation
Angmering Park Estate/Duchess Lavinia's
Charitable Trust
Archer's Omnibus
Bascule Charitable Trust
Bernard and Joyce Coleman Charitable Trust
Billmeir Charitable Trust
Blackwood Group
Boris Karloff Charitable Foundation
Broadley Charitable Trust
Brook Asset Management
Colin Hely Hutchinson
Cricket Society Trust
David Graham
de Winton Family Trust
Derek Raphael Charitable Trust
Ernest Kleinwort Charitable Trust
Feathers Charitable Trust
Gilbert & Eileen Edgar Foundation
Hakluyt
Harry Chetwood
Henry Adams Estate Agents
John Chatfeild-Roberts
John Coates Charitable Trust
Judy Martin Jenkins
Kilroot Foundation
Lansdowne Partners
Liam Treadwell Memorial Fund
Mr James and Lady Emma Barnard
(The Barness Trust)*

*Mr C D and Mrs J E Alderson Charitable Trust
Ned's Fund
Oak Foundation
Oliver Stocken CBE
Peter & Isabel Bristowe
Redburn Partners
Rosalind & Michael Meacock
Charitable Foundation
Sandra Charitable Trust
Sir Tim Rice
Stonewall Park Charitable Trust
Surrey Cricket Foundation
The Allen Charitable Trust
The David & Deborah Stileman Charitable Trust
The Duke of Norfolk
The Drapers' Company
The Grocers' Company
The Miles Foundation
The Peter and Elisabetta Trust
The RAW Foundation
The Tobacco Pipe Makers & Tobacco Trade
Benevolent Fund
The Witheren Foundation
Travel Places
West Sussex County Council
William Allen Young Charitable Trust*

Other donors who wish to remain anonymous

Arundel Castle Cricket Foundation

(Reg Charity No. 1150351)

Donate Online

The easiest way to make a donation to Arundel Castle Cricket Foundation is at www.arundelcastlecricketfoundation.co.uk/donate

Online donations can be made by credit/debit card, PayPal or CAF Account and regular online donations can be made via Direct Debit.

Other ways to Donate:

Bank Transfer

Reference 'Donation'

NATIONAL WESTMINSTER BANK Plc
Sort Code 60-01-18

A/C name:

Arundel Castle Cricket Foundation

A/C no: 46079068

CAF Cheque

Please send a CAF Charity cheque with your name and address to
Arundel Castle Cricket Foundation,
Arundel Park, Arundel,
West Sussex, BN18 9LH

Personal Cheque

Please make cheques payable to ACCF and send to
Arundel Castle Cricket
Foundation,
Arundel Park, Arundel,
West Sussex, BN18 9LH

Gift Aid Declaration

If your donation is eligible for Gift Aid and you have not already provided a Gift Aid Declaration please enter your details below and return this form by post. You do need to do this if you donated via the website link above.

Payment method – tick as appropriate

☐

Cheque

☐

Bank transfer

I would like the charity to treat all my donations made in the past four years and all donations I make from the date of this declaration, until I notify you otherwise, as Gift Aid donations. I confirm that I am a UK taxpayer and pay an amount of income and/or capital gains tax at least equal to the tax that the charity reclaims on my donations in the tax year.

Title _____ First Name _____ Surname _____

Address _____ Postcode _____

Signed _____ Date _____

Email _____

☐

Please tick if you are happy to receive email communications from ACCF

Your personal information will be held securely and will not be shared with any third parties.

PLEASE RETURN COMPLETED GIFT AID DECLARATION TO:

ARUNDEL CASTLE CRICKET FOUNDATION, ARUNDEL PARK, ARUNDEL, WEST SUSSEX, BN18 9LH

CONTACT US: foundation@arundelcastlecricket.co.uk